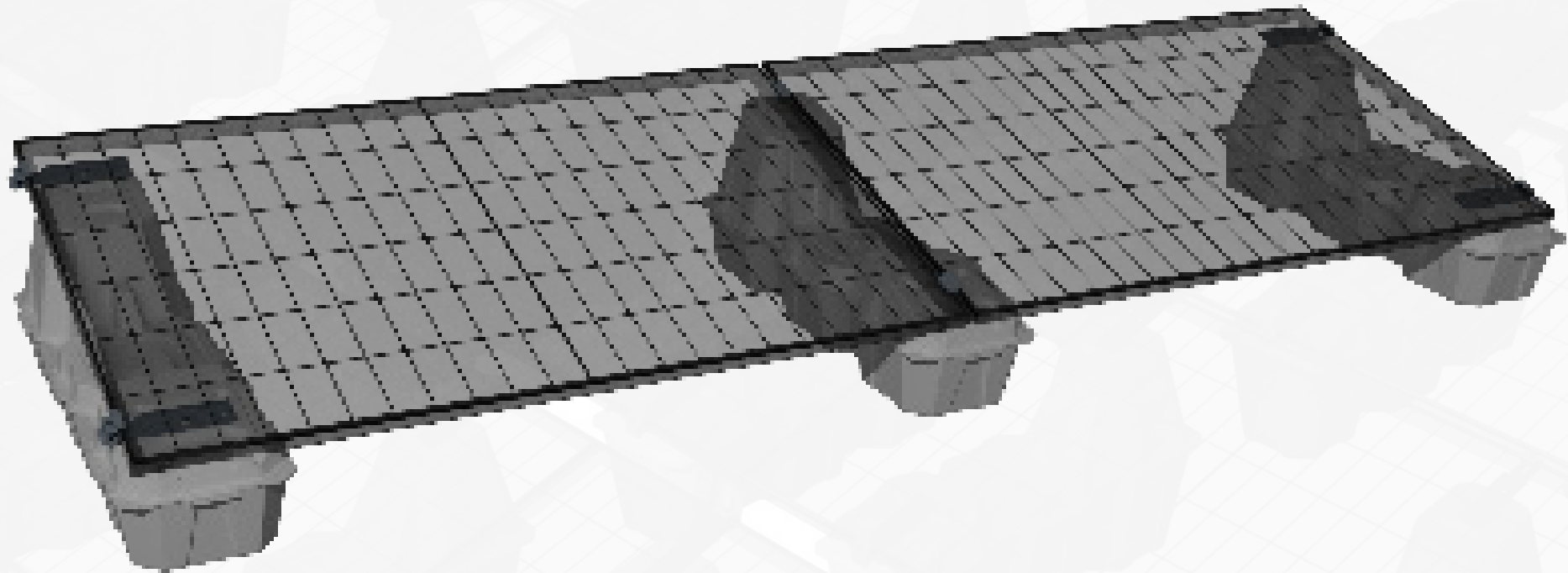




LANDBLOCK[®]



**SUPPORT WITH WATER BALLAST FOR SOLAR PANELS
ON FLAT SURFACES**

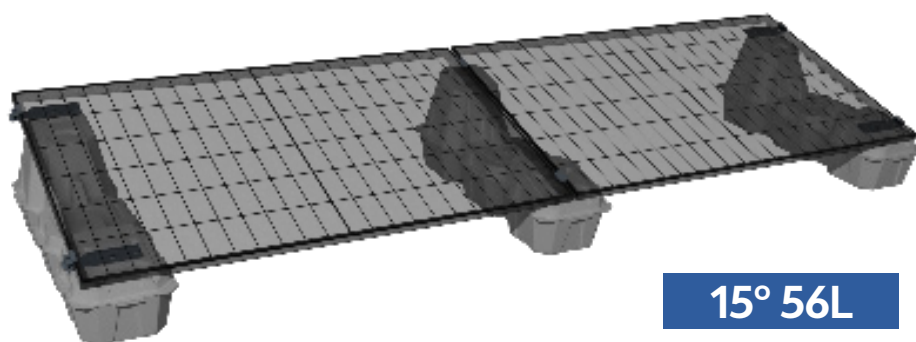


LANDBLOCK[®]

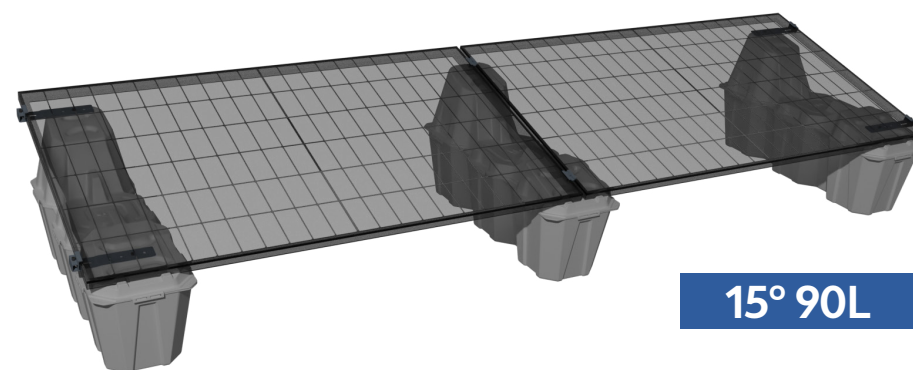


New support for rooftops or flat surfaces with water ballast

Our innovative patented system is designed for installing photovoltaic plants on rooftops or flat surfaces. It's designed to make every phase of installation easier, from logistics to the final assembly.



15° 56L



15° 90L

Two sizes

LANDBLOCK[®] can be configured with 56L and 90L bases so you can choose based on the needs of your project.



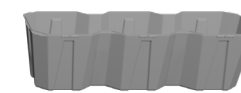
15° 90L



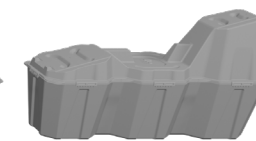
15° 56L



TAPA 15°



BASE 90L



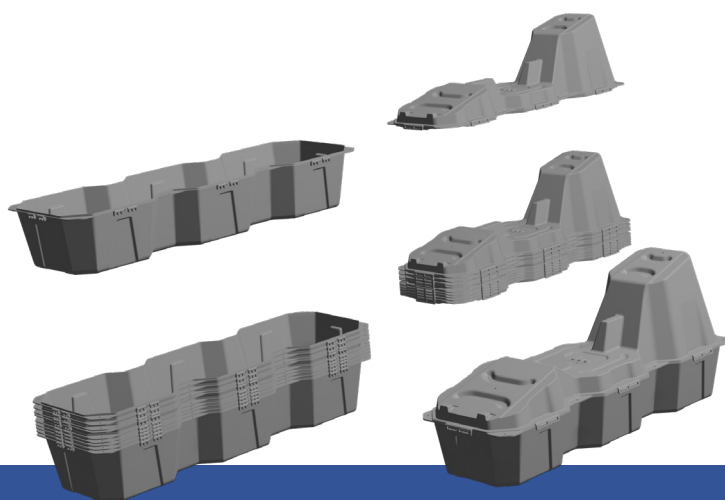
BASE 56L

LANDBLOCK[®]



Advantages

- ✓ Quick and easy assembly.
- ✓ Easy to transport.
- ✓ Very low weight, making installation easy.
- ✓ Ballasted with water or other common materials.
- ✓ Made with HDPE ensuring high durability.
- ✓ No roof perforations.
- ✓ Compatible with large-sized panels.



Logistics/Transport

- ✓ The two-part design allows for stacked transport and storage, minimising the space required.
- ✓ Up to 6 times more space in your warehouse or van.
- ✓ Up to 10 times lighter than concrete-weighted supports.
- ✓ **More than 40 units in just 1 m³.**





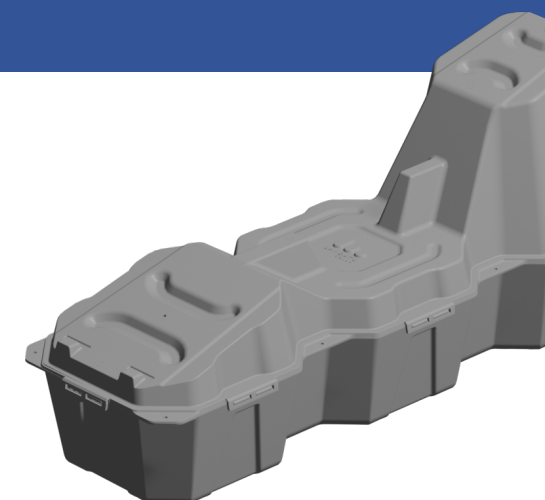
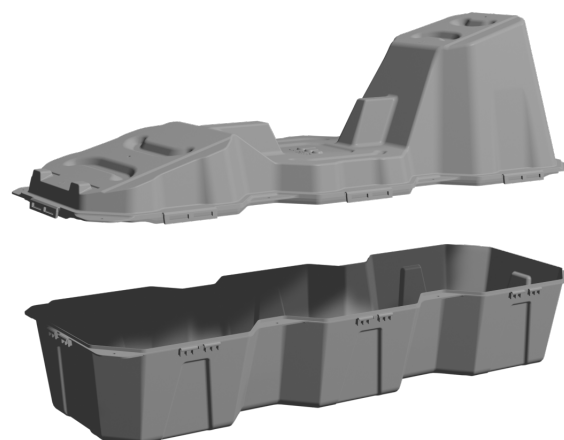
Installation

- ✓ Because it's lightweight (less than 3 kg) the structure can be moved and positioned easily.
- ✓ A single operator can transport several supports by themselves. The structure for 6 panels weighs around 21 kg.
- ✓ After adding ballast each support can weigh more than 100 kg.

= **3 kg** =

All in one

- ✓ Easy to assemble with a "click" closure.



LANDBLOCK[®]

Setup options

Vertical Setup

Installing the panels vertically, taking advantage of their short side, is ideal for limited or high energy density spaces.

East-West Setup

The installation of gable panels optimizes production in the early morning and late afternoon hours, minimizes shadow spaces and reduces aerodynamic loads.

2N Setup

Two LANDBLOCK[®] per panel. Greater ballast.

2N+1 Setup

LANDBLOCK[®] is added to the middle of the panels to increase the load. Ideal for areas with strong winds. Prevents central bending in large panels.

N+1 Setup

Our standard configuration, valid for most cases. Minimizes the number of supports to be used.

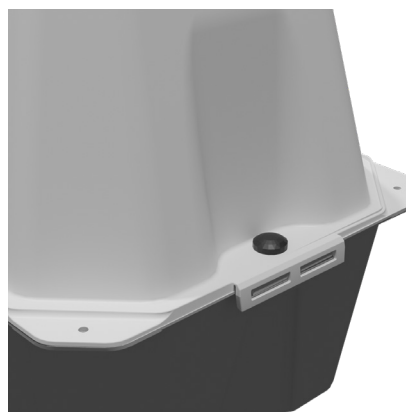
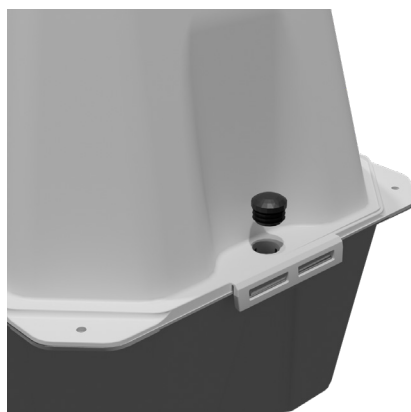
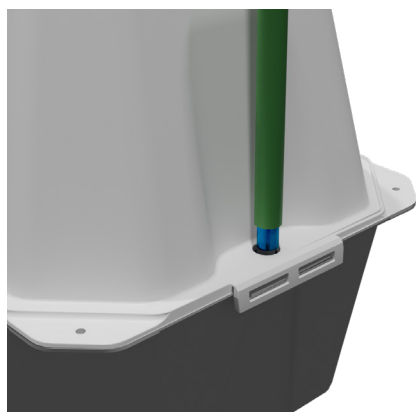


LANDBLOCK®



The panels are fixed directly to LANDBLOCK® in a horizontal or vertical position using standard connecting parts

- ✓ Not having to assemble additional metal parts saves time and money.
- ✓ There is no need to perforate the rooftop, so its watertightness is not affected.
- ✓ Add ballast to the support when it's in its final position by pouring water or another material you think is more suitable (like sand) through the filling hole.



Quick
Installation



Without
drilling rooftop



Without heavy
machinery



LANDBLOCK[®]



Maximum Security

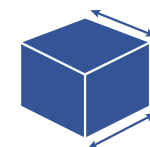
- ✓ Add ballast to each structure independently with the necessary weight according to our installation instructions.
- ✓ It can also be anchored with steel cables for greater security depending on the area.



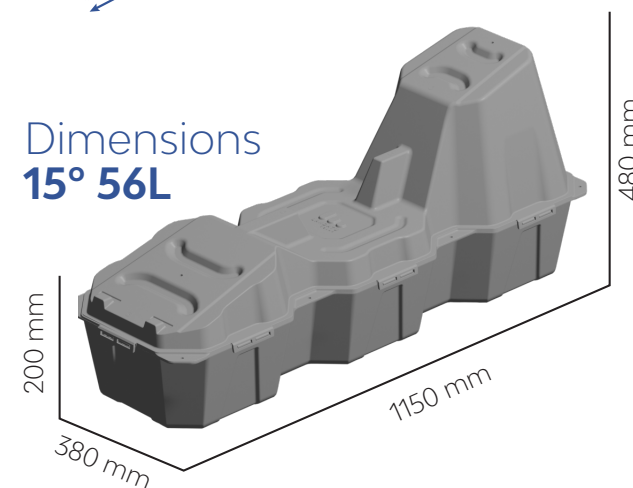
Additional Details

- ✓ 15 degree inclination angle: Combines perfect architectural integration, decreases aerodynamic loads and has good solar production.
- ✓ Environmentally friendly: Made with 100% recyclable materials.
- ✓ Decommissioning or transport: Easy to uninstall at the end of its useful life or if work needs to be done on the rooftop.

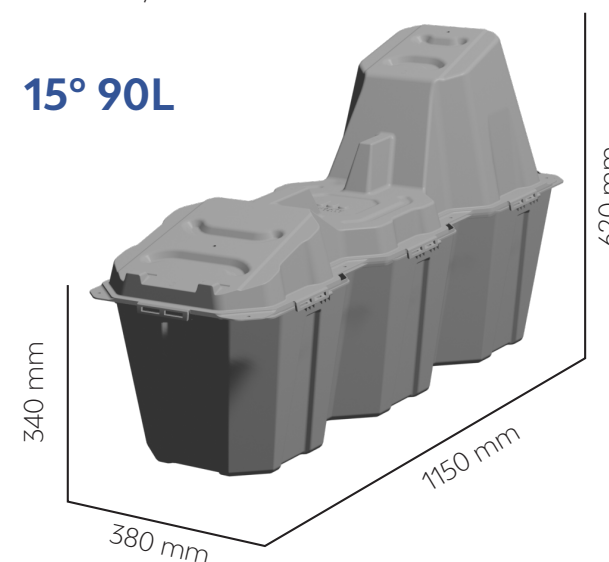
15°

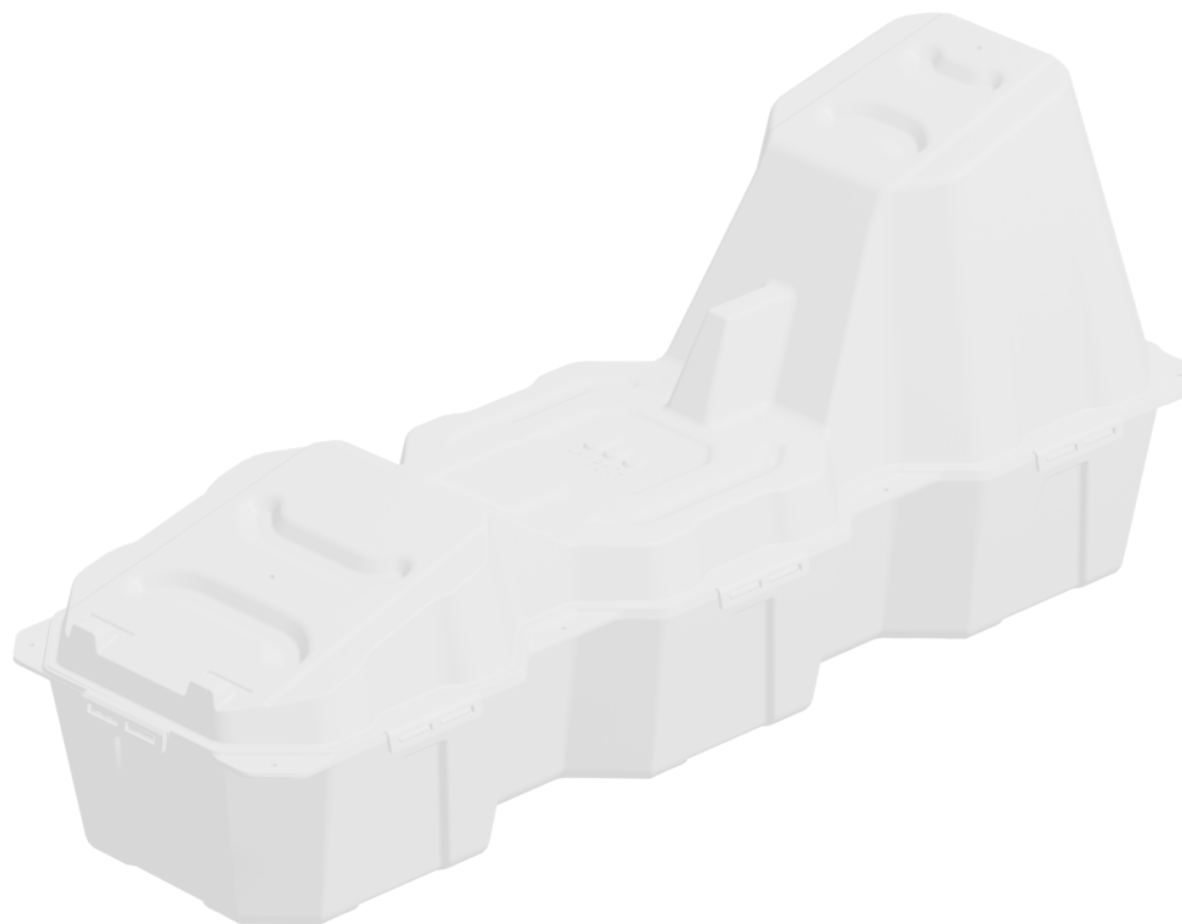


Dimensions 15° 56L



15° 90L





V250411



Alfredo Solano

Director of Business Development

alfredo@landatusolar.com

Tel. +34 640 717 982

Contact:

info@landatusolar.com

www.landatusolar.com

